

PODCAST STUDIO & ART GALLERY

JWAVE ARTISIDE CAST

- OVERVIEW
- SPEC
- DIGITAL SIGNAGE
- PRICE LIST
- RESERVATION FLOW
- CANCEL POLICY
- ACCESS
- CONTACT



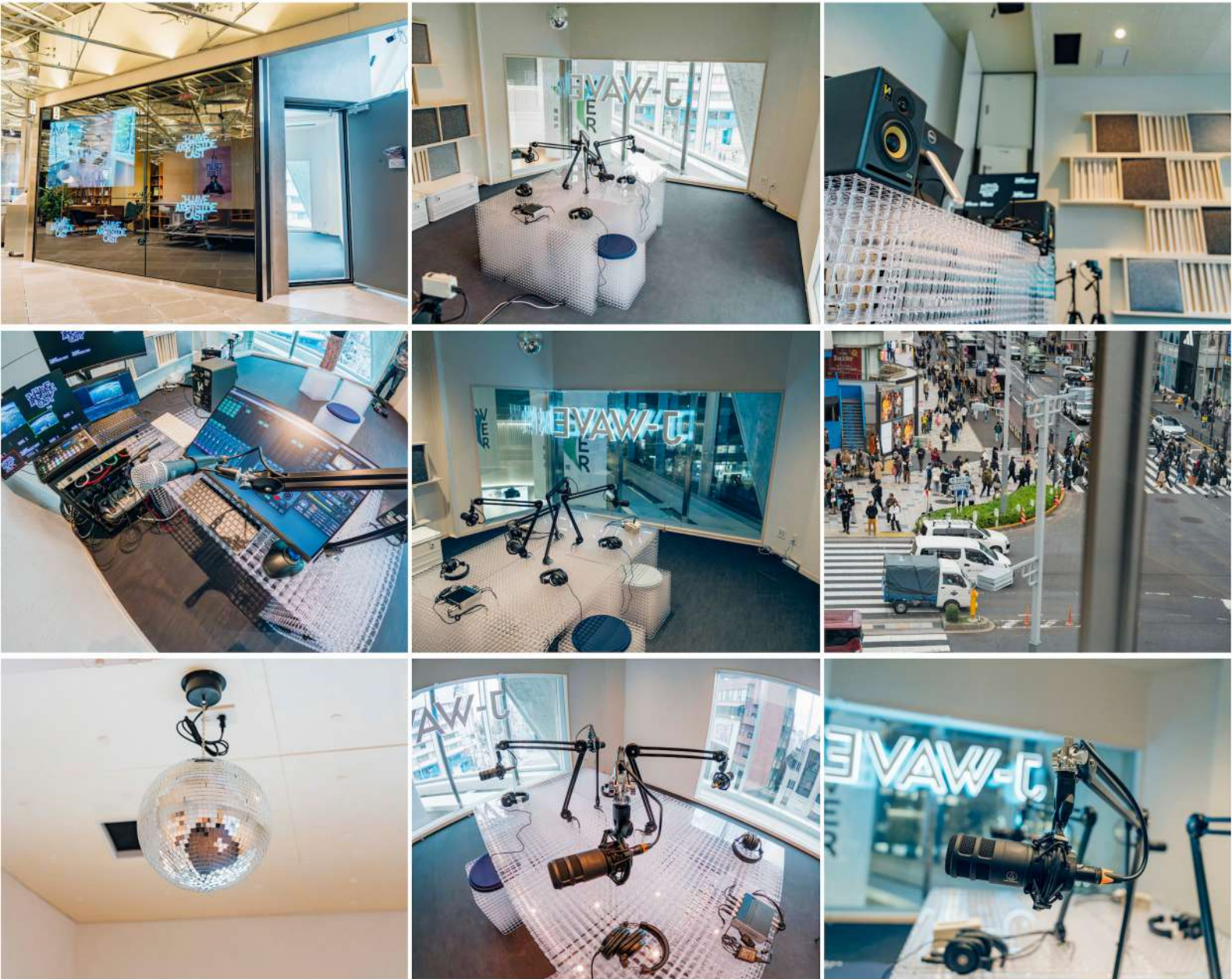
J-WAVE ARRTSIDE CAST

J-WAVE ARRTSIDE CAST is a rental studio specialized in producing audio content, operated by Tokyo's radio station J-WAVE(81.3FM). It can be used not only for audio recording but also for video shooting, streaming, even as a meeting space. We hope that everyone using this studio will find it easier to start your own podcast and expand your creativity.



OVERVIEW

photo : shoichi nakamura



Equipment specs

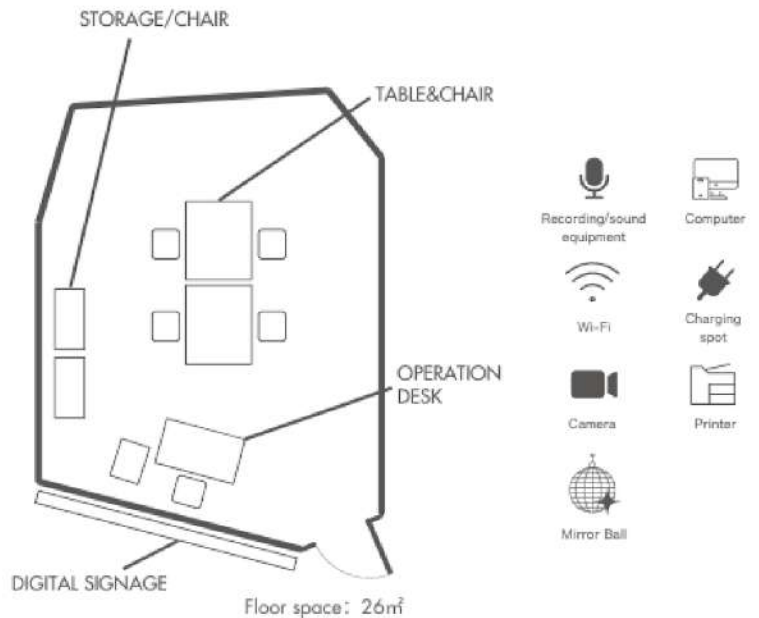
Audio IO & Sound Grid Server: Digigrid IOS-XL

SoundGrid Host Application; eMotion ST64ch

DAW: Studio One 6 Artist

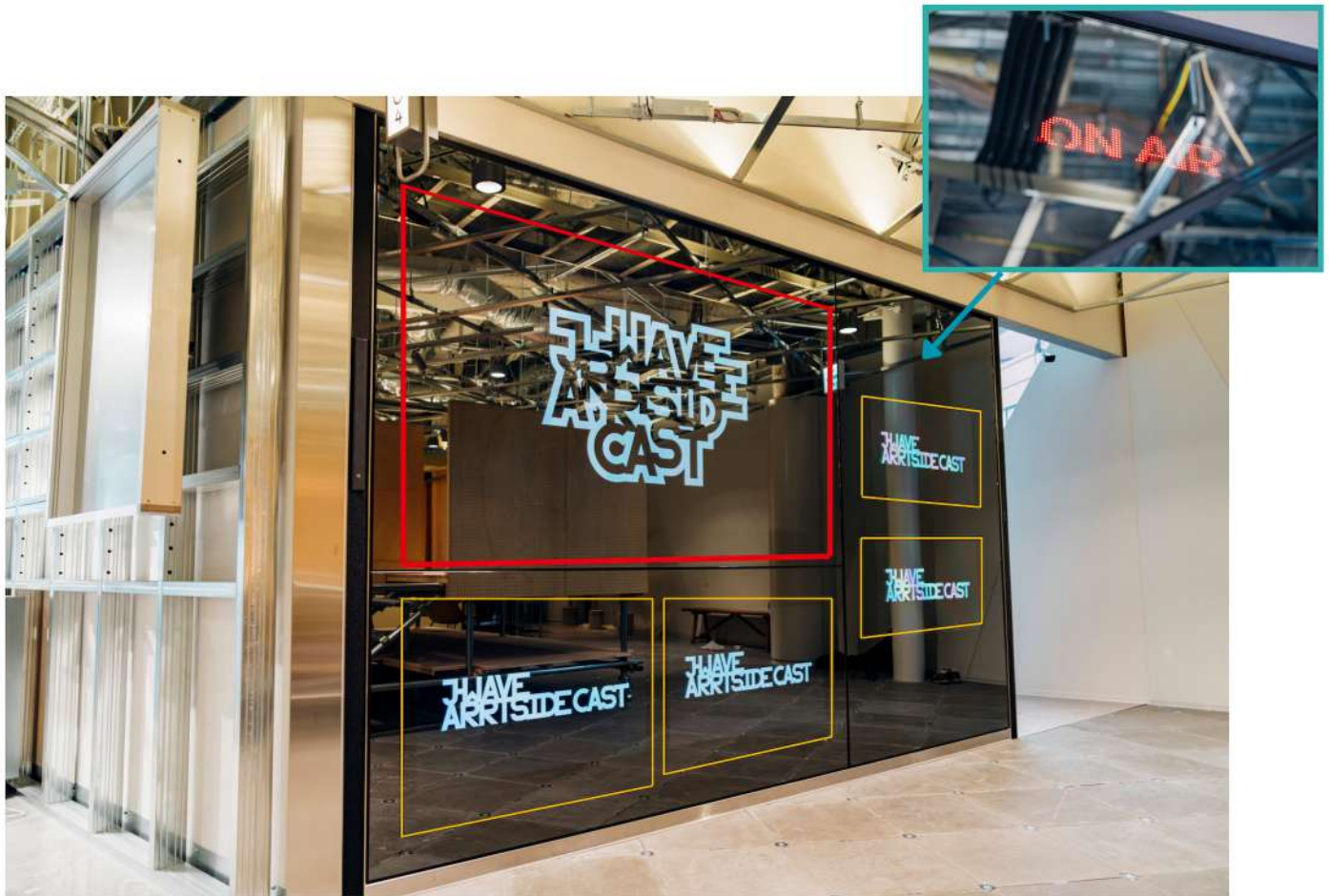
Microphone: Audio Technica AT2040

Live streaming host: OBS



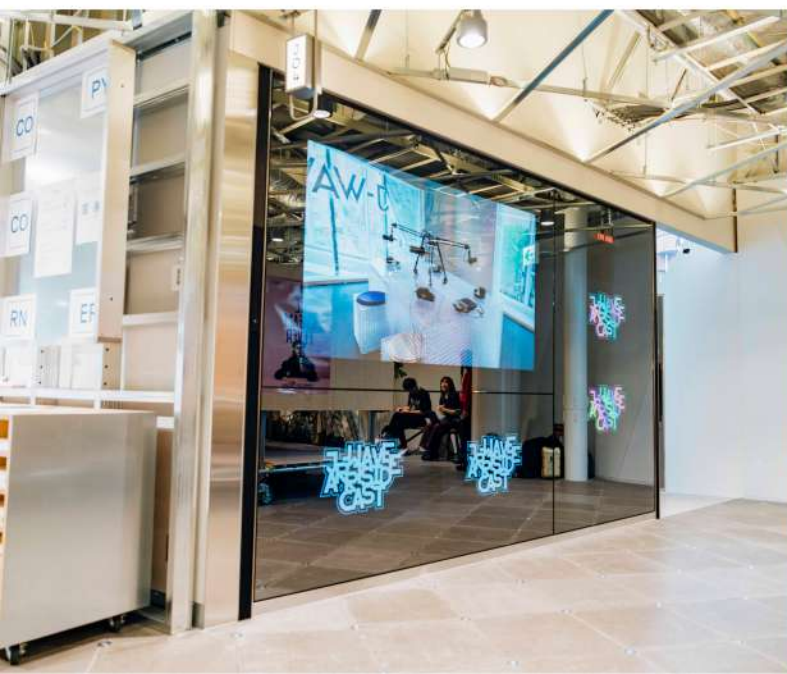
DIGITAL SIGNAGE

We have digital signage installed outside the studio, capable of projecting five images and broadcasting the studio's activities externally through cameras. Among the five digital signage panels, four can be used as a "Digital art gallery" to display your own digital content.



BIG MONITOR (BRAVIA KJ-85X80L)

SMALL MONITORS (BRAVIA KJ-43X80L)



PRICE LIST

(*tax included)

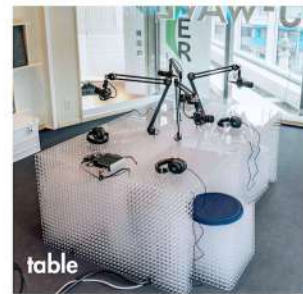
| PLAN | DETAIL | WEEKDAY | WEEKENDS/ HOLIDAYS |
|---------------------------------------|---|---------------|-----------------------|
| SPACE RENTAL PLAN -individual use- | Rental space plan ※Audio recording and use of studio equipment are not available with this plan. | ¥2,200/1h | ¥3,850/1h |
| RECORDING PLAN -individual use- | Specializes in audio recording. Please select this plan if you plan to use the studio's equipment for audio or video recording. | ¥3,850円/1h | ¥5,500/1h |
| SPACE RENTAL PLAN -corporate use- | Rental space plan ※Audio recording and use of studio equipment are not available with this plan. | ¥5,500/1h | |
| RECORDING PLAN -corporate use- | Specializes in audio recording. Please select this plan if you plan to use the studio's equipment for audio or video recording. | ¥8,800/1h | |
| DIGITAL SIGNAGE | Using four digital signage displays. | ¥22,000/1week | |

| OPTIONAL PLAN | DETAIL | |
|--|--|----------|
| Editing plan -BASIC- | Audio Editing / Cutting Unnecessary Parts / Volume Adjustment | ¥17,500 |
| Editing plan -STANDARD- | Audio editing / Cutting unnecessary parts / Volume adjustment / BGM arrangement / Arrangement of one narrator | ¥55,000 |
| Editing plan- OMAKASE- -individual use- | Full support from program planning and editing, recording, thumbnail creation, to distribution. | ¥110,000 |
| Editing plan- OMAKASE- -corporate use- | Full support from program planning and editing, recording, thumbnail creation, to distribution. | ¥220,000 |
| Narrator arrangement | narrator ¥55,000 / 1 hour For every hour beyond 2 hours, an additional fee of ¥10,000 per hour will be charged. | ¥55,000 |
| Creating thumbnail image | ¥27,500 / 1 design | ¥27,500 |
| Distribution to major streaming services* | ¥15,000 / 1 episode *We will manage registration, distribution, analysis, and monetization of podcasts. *It will be renewed annually. The renewal period and details will be provided by the person in charge. | ¥15,000 |

| Sound / networking equipment | qty |
|----------------------------------|-----|
| PC for sound mixing | 1 |
| headphone amplifier | 1 |
| microphone: AudioTechnica AT2040 | 6 |
| headphone: YAMAHA HPH-MT5 | 7 |
| microphone arm | 4 |
| microphone stand | 2 |
| cables | 1 |
| speaker | 2 |
| PA speaker | 2 |
| PA amplifier | 1 |
| PC connected to J-WAVE | 1 |
| PC for play back | 1 |
| PC for recording | 1 |
| monitor | 3 |
| CDJ(Gemini CDM-4000BT) | 1 |
| UPS | 1 |
| printer (DCP-J982N) | 1 |



| Video equipment and other gear | qty |
|----------------------------------|-----|
| big monitor (BRAVIA KJ-85X80L) | 1 |
| small monitor (BRAVIA KJ-43X80L) | 4 |
| PC for video play back | 2 |
| Camera | 2 |
| tripod | 2 |
| table | 2 |
| chair | 5 |
| storage | 2 |
| mirror ball | 1 |



1. Access the official website
2. Choose the reservation page (STORES reservation) or download the dedicated app(BABY THE COFFEE BREW CLUB)
3. Confirm the usage plan, date, and fee
4. Make the payment
5. Check the reservation confirmation email

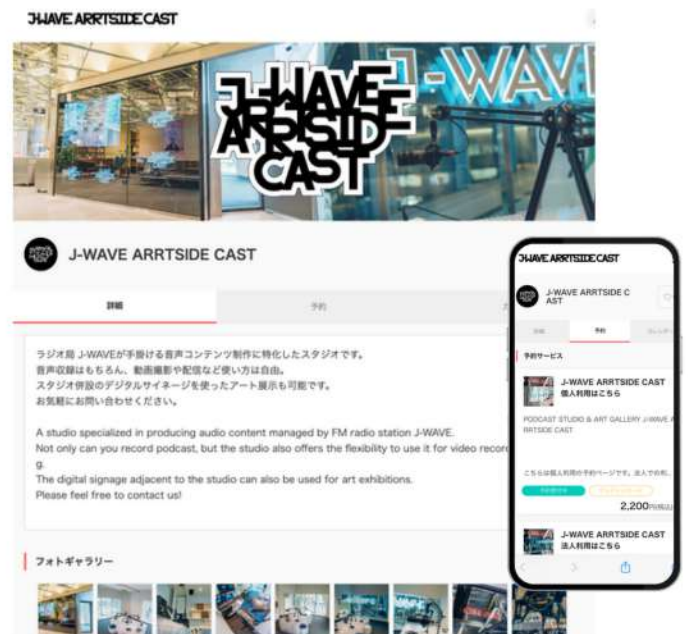
BABY THE COFFEE BREW CLUB



Membership registration (free of charge) is required



STORES 予約



CANCEL POLICY

Changes or cancellations can be made up to **3 days before the reservation date.**

Cancellation Policy:

- Cancellation up to 3 days before: No cancellation fee
- Cancellation 2 days before or later: 100% of the reservation fee will be charged

| CATEGORY | 2024/7/1 |
|-------------------------------|--|
| Terms of use | The equipment in the studio may be changed without prior notice. |
| | The studio is monitored by surveillance cameras. |
| | Setup and cleanup are included in the rental time. |
| | If you move any studio equipment, please return it to its original position within your rental time. |
| | If any equipment in the studio is damaged, please inform the staff. |
| | For damages to the equipment beyond normal usage, we may charge you repair fee. |
| | We are not responsible for the loss, theft, or trouble of valuables inside the store. |
| | Entry to the studio after 10 PM is prohibited for those under 18. |
| | If the number of users exceeds a certain limit, we may have to decline service. |
| Smoking and food/drink policy | Smoking is prohibited inside the building. |
| | Please contact us in advance if you plan to bring food or beverages into the studio. |
| | Please refrain from bringing items with strong scent. |
| | If equipment is damaged due to food or drinks, we may charge repair fees. |
| | Bringing alcohol is generally prohibited. |
| Reservation | Please make your reservation through "STORES予約" or dedicated app "BABY THE COFFEE BREW CLUB HP". |
| | We do not accept provisional reservations. |
| | We may contact you to confirm your reservation details. If we cannot reach you, your reservation may be canceled. |
| Cancel policy | The cancellation fee applies to the studio usage fee (including optional fees). |
| | If you are more than 15 minutes late for your reservation without notification in advance, your reservation will be canceled. |
| | The cancellation fee is free up to 3 days in advance and 100% after 2 days in advance. |
| | In the following cases, we may notify the user and cancel/change the reservation, or stop the use of the facility. In all cases, no cancellation fee will be charged, and the full reservation fee will be refunded. In this case, expenses such as travel costs, communication fees, and any costs other than studio usage fees are not included. |
| | If the facility cannot be used due to natural disasters such as earthquakes or abnormal weather, fires, infectious diseases, or other reasons beyond our control. |
| | If we determine that it is appropriate to stop use due to social circumstances. |
| | If the facility cannot be used due to equipment failure, modifications, repairs, or inspections. |
| | If unavoidable circumstances arise due to changes in laws, government guidance, etc. |
| Digital signage | To apply for digital signage use, please contact us via the CONTACT section on the website (https://www.wave.co.jp/artsidecast/contact/). |
| | There is a pre-screening for digital signage use. |
| Prohibited matters | In the following cases, your application may be canceled, or you may be asked to leave the studio. We are not responsible for any damages incurred in such cases. Even if you have paid the usage fee, we will not refund the received usage fee. In such cases, future use applications may be refused: |
| | Acts that violate laws or public order and morals. |
| | Acts or behavior that disturb surrounding residents, other facility users, building tenants, including loud noises, vibrations, odors, and smoke. |
| | Acts that may damage or defile the facility and equipment. |
| | Bringing flammable or explosive items and dangerous goods. |
| | Hosting events where there is a possibility of usage or attendance by gang members or other antisocial forces. |
| | Bringing animals other than guide dogs, service dogs, and hearing dogs. |
| | Activities such as unauthorized item sales, fundraising, posting notices, distributing printed materials, photography, or similar actions without permission from the studio. |
| | Taping or nailing on the facility. |
| | Installing or leaving items in the common areas of the building |
| | Transferring or subleasing the whole or part of the usage rights to a third party. |
| | If the management determines that an activity is inappropriate for operations or poses a safety risk. |

ACCESS

HARAKADO3F, 6-31-21, JINGUMAE, SHIBUYA-KU, TOKYO, 150-0001



JR YAMANOTE LINE
"HARAJUKU STATION"

TOKYO METRO CHIYODA/FUKUTOSHIN LINES
"MEIJI-JINGUMAE STATION" EXIT 4・7

CONTACT

J-WAVE ARTSIDE CAST

For inquiries regarding the studio, please contact us through the official website's inquiry form or the email address below.

✉ jac@j-wave.co.jp



Official site



Instagram

J-WAVE 81.3FM

Roppongi Roppongi Hills Mori Tower 6-10-1 Minato-ku, Tokyo, 106-6108
TEL 03-6832-1111